

VILLAGGIO ISLES-PHASE I

TERRANOVA PUD, A PLANNED UNIT DEVELOPMENT
BEING A PORTION OF THE SOUTHWEST 1/4 OF SECTION 16, TOWNSHIP 46 SOUTH, RANGE 42 EAST, TOGETHER WITH
A REPLAT OF A PORTION OF THE PLAT OF SUBDIVISION OF S.E. 1/4 AND W. 1/2 OF SECTION 16 TOWNSHIP 46S RANGE 42E,
AS RECORDED PLAT BOOK 1, PAGE 158 OF THE PUBLIC RECORDS OF PALM BEACH COUNTY, FLORIDA

THIS INSTRUMENT PREPARED BY
DAVID P. LINDLEY
OF
CAULFIELD and WHEELER, INC.
SURVEYORS - ENGINEERS - PLANNERS
7301-A WEST PALMETTO PARK ROAD, SUITE 100A
BOCA RATON, FLORIDA 33433 - (561)392-1991
FEBRUARY - 2008

COORDINATE TABLE

P.R.M.	NORTHING	EASTING
1	771561.50	928395.99
2	771572.96	928345.86
3	771569.92	928065.87
4	771599.19	928030.96
5	771675.24	928018.35
6	771907.75	927863.40
7	773028.30	927874.75
8	774148.84	927886.10
9	774160.22	928699.31
10	774171.61	928512.53
11	773863.87	929511.20
12	773868.05	929849.43
13	773135.89	929846.28
14	772555.85	929843.78
15	772538.64	928895.67
16	772481.69	928870.15
17	771959.78	928871.00
18	771959.74	928844.98
19	771566.37	928845.63

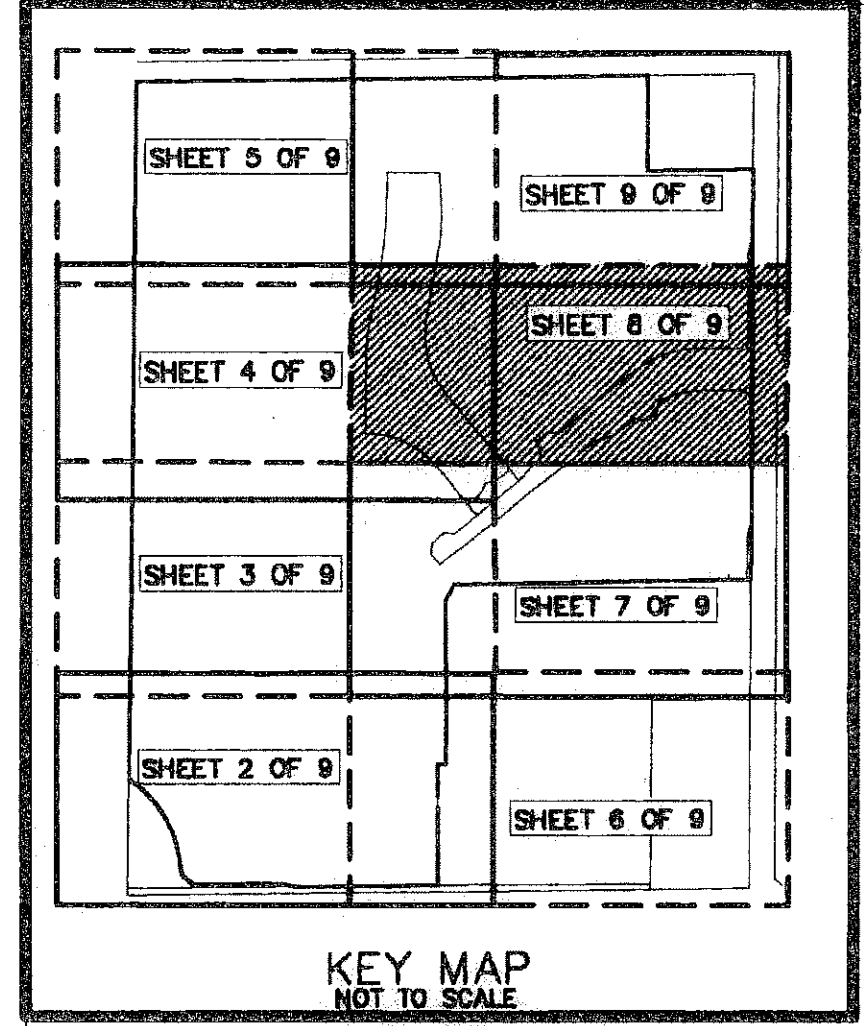
NOTES COORDINATES, BEARINGS AND DISTANCES

COORDINATES SHOWN ARE GRID
DATUM = NAD 83 1990 ADJUSTMENT
ZONE = FLORIDA EAST
LINEAR UNIT = US SURVEY FEET
COORDINATE SYSTEM 1983 STATE PLANE
TRANSVERSE MERCATOR PROJECTION
ALL DISTANCES ARE GROUND
SCALE FACTOR = 1.0000265
GROUND DISTANCE X SCALE FACTOR = GRID DISTANCE
BEARINGS AS SHOWN HEREON ARE GRID DATUM,
NAD 83 1990 ADJUSTMENT, FLORIDA EAST ZONE.

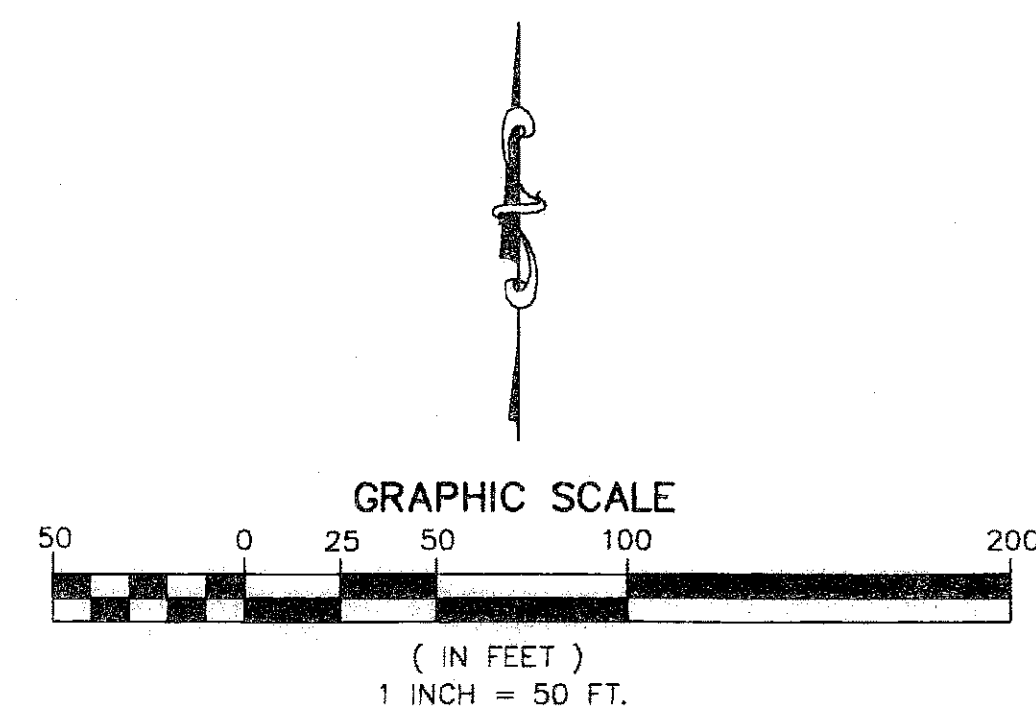
STATE OF FLORIDA
COUNTY OF PALM BEACH
THIS PLAT WAS FILED FOR
RECORD AT _____ M.
THIS _____ DAY OF _____
A.D. 2008 AND DULY RECORDED
IN PLAT BOOK _____ ON
PAGES _____ AND _____
SHARON R. BOCK
CLERK AND COMPTROLLER

BY: _____
DEPUTY CLERK

SHEET 8 OF 9



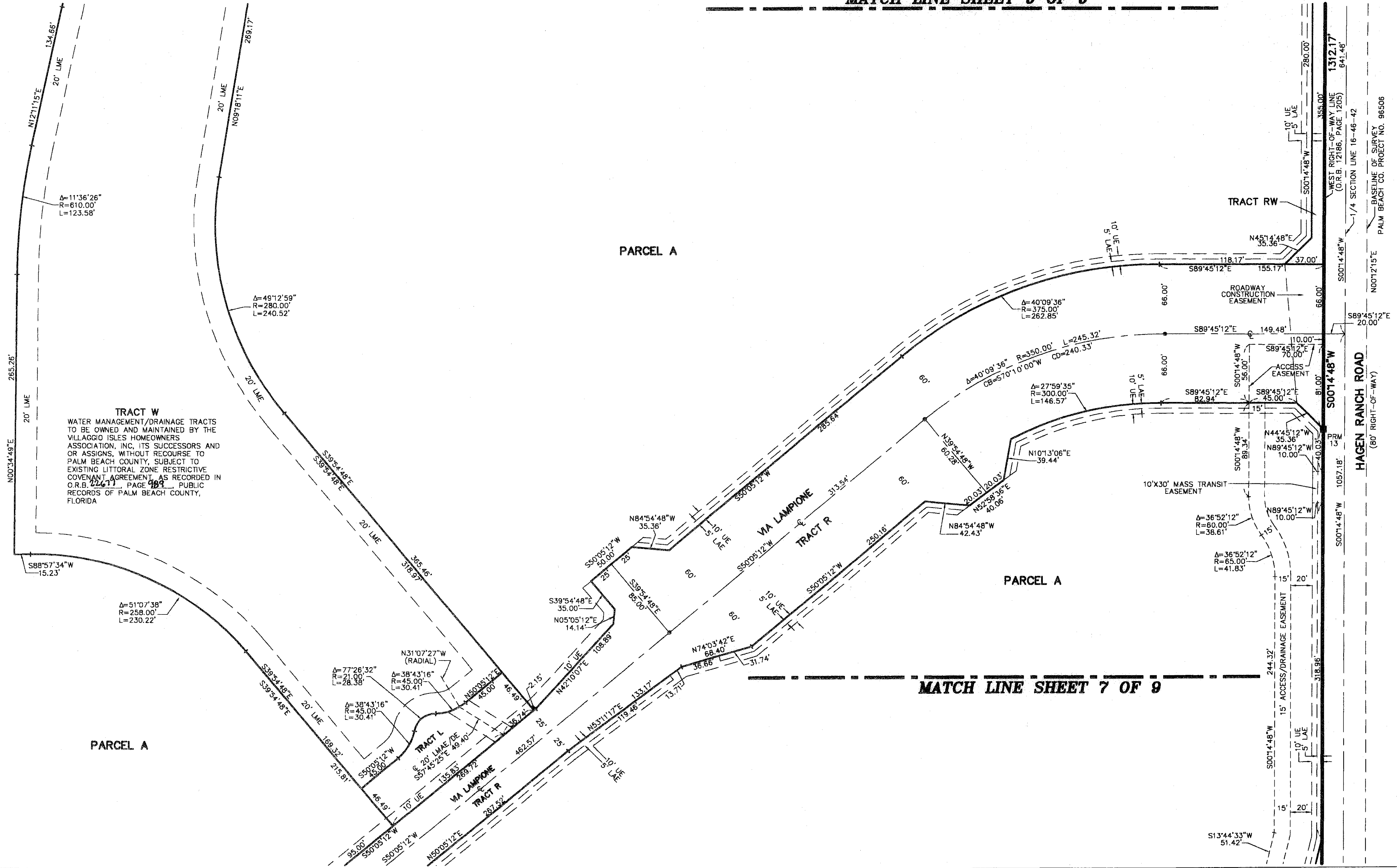
0430.002



MATCH LINE SHEET 4 OF 9

MATCH LINE SHEET 9 OF 9

MATCH LINE SHEET 7 OF 9



HUNTINGTON LAKES SECTION FIVE
(PLAT BOOK 56, PAGES 78-79)

GATEWAY ROAD
(PLAT BOOK 37, PAGES 37-38)

EVERGREEN I
(PLAT BOOK 45, PAGE 66)